

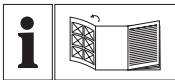
WET & DRY VACUUM CLEANER PNTS 1300 A1



GB IE

WET & DRY VACUUM CLEANER

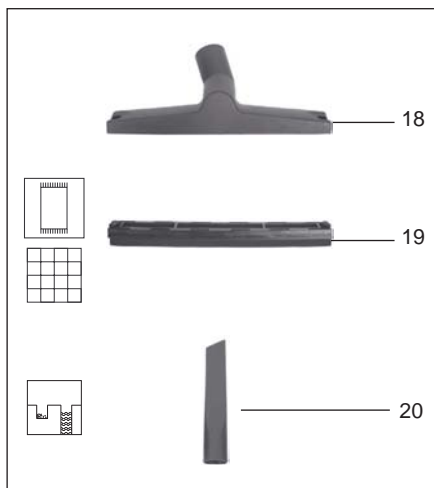
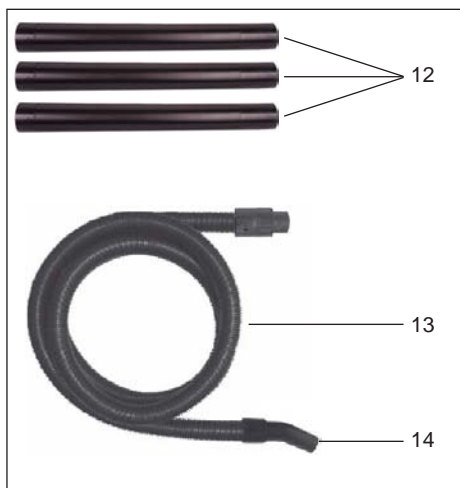
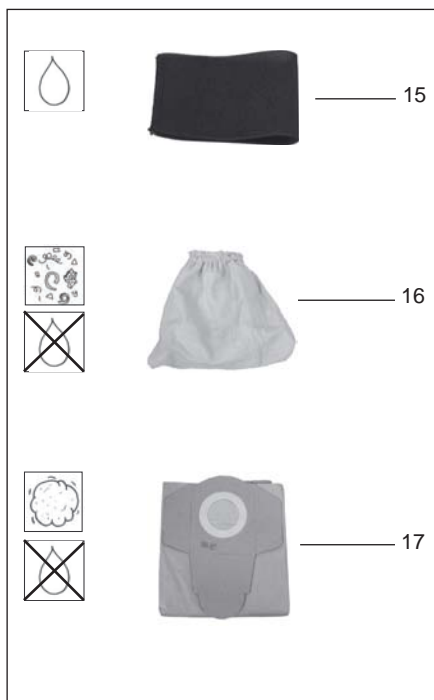
Translation of original operation manual

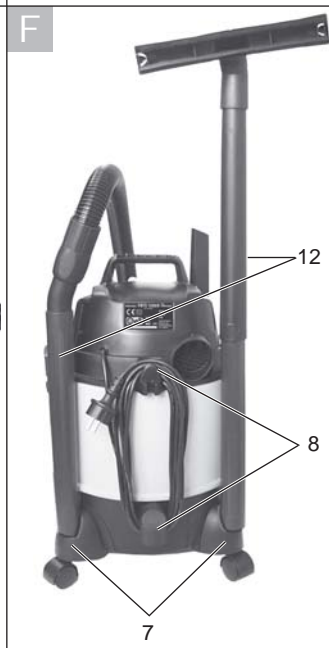
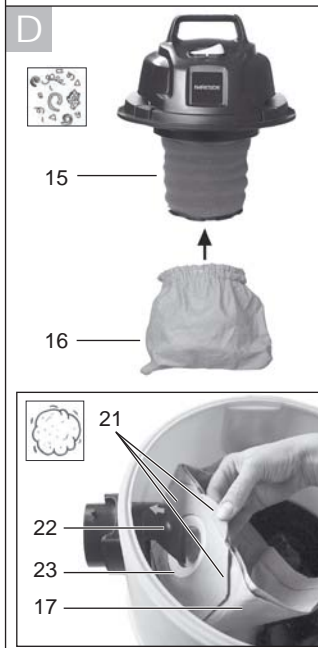
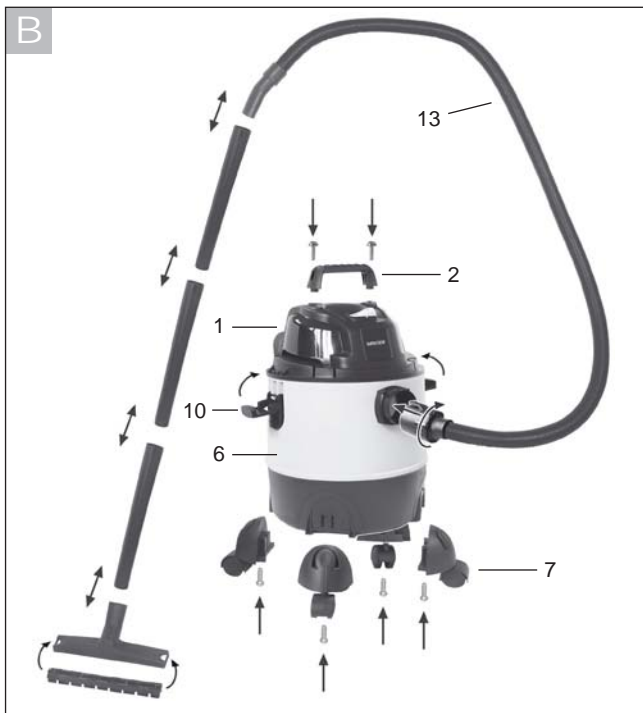


GB IE

Before reading, unfold the page containing the illustrations and familiarise yourself with all functions of the device.

A





Contents

Application	5
Symbols used in the instructions	5
Safety information	5
Description of operation	6
Overview	7
Contents	7
Assembly	7
Switching on/off	8
Wet vacuuming	8
Dry vacuuming	8
Blowing	8
Cleaning/Maintenance/Storage	8
Warranty	9
Disposal/Environmental protection	9
Technical data	10
Replacement parts	10
EU declaration of conformity	11
Exploded Drawing	12
Grizzly Service-Center	13

Application

The appliance is intended for domestic wet and dry vacuuming in, for example, the house, work room, car or garage. Vacuuming of flammable or explosive materials or those which endanger health is prohibited. The manufacturer will not be held responsible for injuries resulting from use which does not comply with the directions, or from incorrect use.

Symbols used in the instructions



Hazard symbols with information on prevention of personal injury and property damage.



Precaution symbol (explanation of precaution instead of exclamation mark) with information on prevention of harm / damage.



Notice symbol with information on how to handle the device properly.

Safety information



Before initial start-up, please read through these operating instructions carefully prior to using the machine. Keep the instructions safe and pass them on to any subsequent user so that the information is always available.



Please read the following safety guidelines in order to avoid risk of fire, electric shock, personal injury and damage to objects:

To avoid accidents and injuries:

- Keep the equipment away from children and pets. Children must be supervised in order to ensure that they do not play with the equipment.
- Children should only be allowed to use the appliance under supervision.
- The device must not be used by people (including children) with limited physical, sensory or mental faculties or who lack the necessary experience and/or knowledge - other than they are supervised by a person responsible for safety or are being instructed to operate the appli-

- ance by such a person.
- Never leave a machine which is ready for operation unattended at the work-place.
- People and animals must not be vacuumed using the machine.
- Do not vacuum any hot, incandescent, flammable, explosive materials, or those which endanger health. This includes hot ashes, petrol, solvents, acids or caustic solutions. Personal injury could occur.
- Nozzles and suction tubes must not reach head level whilst in use. Personal injury could occur.

To avoid accidents and injuries from electric shocks:

- Ensure that the mains cable is not damaged by being pulled over sharp edges, by jamming, or by pulling on the cable.
- Before each use, check the power supply lead and the extension cable for damage and ageing. Do not use the equipment if the cable is damaged or worn. Danger of electric shock hazard.
- If the power cable for this equipment is damaged, it must be replaced by the manufacturer, a customer service agent of the same or a similarly qualified person in order to prevent hazards.
- Switch the machine off and disconnect the mains plug:
 - when the machine is not in use,
 - before the machine is opened up,
 - for all maintenance and cleaning work,
 - if the connecting cable is damaged or tangled up.
- Only use replacement parts and accessories delivered and recommended by our Service Centre (see addresses page 13). The use of parts

by other manufacturers immediately renders the guarantee void.

- Do not use the cable to pull the plug out of the socket. Protect the cable from heat, oil, and sharp edges.
- Make sure that the mains voltage corresponds with the information on the rating plate.
- Only plug the appliance into a socket which is safeguarded by at least 13A.
- The device must only be connected to a mains socket via a residual-current circuit breaker (RCD) with a rated leakage current of not more than 30 mA.

CAUTION! The following states how damage to the appliance and possible injury to people can be avoided:

- Ensure that the machine is correctly assembled and the filters are in the correct position.
- Do not use without the filter. This could damage the machine.
- Only have repairs carried out at our authorised customer service points.
- Observe the instructions for cleaning and maintenance of the machine.
- Store the appliance in a dry place and out of reach of children.

Description of operation

The wet and dry vacuum cleaner is equipped with a robust plastic container for waste collection. The castors make the appliance very easy to manoeuvre. The suction flow is switched off by a float during wet vacuuming once the waste tank is full. The appliance is also equipped with a blower function.

The following describes the function of the operating parts.



You will find illustrations for the machine on the fold-out pages.

Overview

A

Housing

- 1 Motor housing
- 2 Carrying handle
- 3 On / off switch
- 4 4 attachment ports for accessories
- 5 Suction connection
- 6 Waste container
- 7 4 feet with castors and accessory fittings
- 8 Cable holder
- 9 Mains cable
- 10 Locking clips
- 11 Blower connection

Accessories

- 12 3-part vacuum tube
- 13 Vacuum hose with
- 14 Handle component

Filter

- 15 Foam filter for wet vacuuming
- 16 Material filter for dry vacuuming
- 17 Paper filter bag for vacuuming fine dust

Nozzles

- 18 Floor nozzle with
- 19 Turnable insert attachment with brush and rubber lip, for vacuuming carpets and smooth surfaces
- 20 Crevice nozzle

A

- 1 Motor housing
- 2 Carrying handle
- 6 Waste container
- 7 4 feet with castors and accessory fittings
- 12 3-part vacuum tube
- 13 Vacuum hose
- 15 Foam filter
- 16 Material filter
- 17 Paper filter bag
- 18 Floor nozzle with
- 20 Crevice nozzle
- 6 cross-head screws

Dispose of the packaging material properly.

Assembly



Pull out the mains plug. This will prevent danger of injury from electric shock.

B

1. Attach the carrying handle (2) firmly using the cross-head screws supplied.
2. Attach the feet (7) and secure the feet with the Philips head screws supplied.
3. Insert the filter:
 - Foam filter for wet vacuuming (see **C** No. 15).
 - Foam filter plus material filter (see **D** No. 16) for dry vacuuming
 - Paper filter bag for fine dust (see **D** No. 17)

Never vacuum without a filter!

4. Place the motor housing (1) on top of the dirt collector (6) and close it with the clip (10).
5. Connect the vacuum hose (13) (Bayonet closure) and the accessories.

Contents

Unpack the appliance and check that it is complete:

The appliance is supplied with the motor head fitted (see **A** No. 1). To remove the motor head, open the securing clips (see **A** No. 10).

Switching on/off



Connect the mains plug.

Switching on the vacuum:

On / off switch (see **A** No. 3)
in position "I"

Switching off the vacuum:

On / off switch (see **A** No. 3)
in position "O"

C Wet vacuuming

In order to wet vacuum, attach the foam filter (15) onto the filter tray. Only use a dry filter.



If the waste tank is full, a float closes the suction opening, and the vacuum operation is interrupted. Switch off the machine and empty the waste tank.



If foam or liquid exits, switch off the machine immediately.

D Dry vacuuming

In order to dry vacuum, put the material filter (16) over the filter tray with the attached foam filter (15).

Fine dust vacuuming:



When vacuuming very fine dust, you may find dirt accumulating more quickly than usual. We therefore recommend additional use of the paper filter bag.

Insert the fabric filter

1. Fit the fabric filter (16) over the filter basket with attached foam filter (15).

Insert the paper filter bag

2. Fold down the side flaps (21) on the paper filter bag (17) at the perforation.
3. Fit the paper filter bag (17) with the short flap upwards over the internal suction pipe (22) (see arrow ➡). The sealing ring (23) at the filter bag opening must completely surround the lip on the suction pipe.



Blowing

To use the blower function, screw the suction hose (13) (bayonet closure) to the connection (11) on the motor head.

Cleaning/Maintenance/Storage



Pull out the mains plug.
This will prevent danger of injury from electric shock.



Always check the appliance before use for any obvious faults such as a defective mains cable, and have these repaired or replaced.

Cleaning the appliance



Never hose the appliance down with water. Never use aggressive cleaning agents or solvents. This could damage the appliance.

- After use, empty the waste tank.
- Clean the waste tank with a damp cloth.
- Wash the foam filter with lukewarm

- water and soap, and allow to dry.
- Beat out the material filter. If necessary, wash with lukewarm water and soap and allow to dry.
- Replace the paper filter bag when full (see “replacement parts” for reordering)

Storage:

- F** - For storage, wind the cable around the cable holder (8) at the back of the appliance.
- Insert the separated vacuum tubes (12) into the accessory holder on the appliance feet (7).
- The attachment ports on the motor part serve as nozzle storage (see **A** No. 4) or on the feet (7).
- Store the appliance in a dry place and out of reach of children.

Warranty

This unit has a guarantee period of 36 months, or 12 months for units used on a commercial basis or for replacement units according to the statutory regulations. Damage resulting from normal wear and tear, overloading or improper use is excluded from the warranty. Certain parts such as the filters and attachments are subject to normal wear and tear and are excluded from the warranty.

Warranty claims can only be recognised if the directions in the Operating Instructions on cleaning and maintenance have been followed. Damage resulting from material defects or manufacturing errors will be rectified at no extra charge by replacement or repair, on condition that the appliance has

not been dismantled and is returned to our Service Centre with proof of purchase and guarantee (see addresses page 13).

You can have repairs which are not covered by the warranty carried out by our Service Center which will charge you for this. They will be happy to draw up a cost estimate for you.

We can only carry out work on machines which have adequate packaging and postage.

Warning: In the case of a warranty claim or a service, please deliver your machine to our service address in a clean condition accompanied by a description of the problem.

Machines sent without prepaid postage – as bulky goods, express, or by special freight – will not be accepted.

If you have a justified guarantee claim, please contact our service centre by telephone, which will then advise you on how the claim will be processed.

Defective units returned to us will be disposed of for free.

Disposal/Environmental protection

Be environmentally friendly. Return the tool, accessories and packaging to a recycling centre when you have finished with them.



Machines must not be disposed of with household refuse.

Take the machine to a recycling point. The waste plastic and metal parts can be separated, accurately graded and passed on for recycling. Contact our Service Centre for more details.

Defective units returned to us will be disposed of for free.

Technical data

Power consumption of motor1300 W
 Mains voltage 230V~, 50 Hz
 Safety class ☐ II
 Protection category.....IP24
 Suction force..... 15 kPa
 Cable length 4 m
 Waste tank capacity (brutto)..... 20 l
 Usable container volume (water)..... 12 l
 Weight (incl. all accessories) 5,3 kg

Technical and visual modifications may be carried out due to further development without prior notice. All dimensions, information and statements provided in these Operating Instructions are therefore subject to amendment. Legal claims which are based on the Operating Instructions can therefore not be recognised.

Replacement parts

You can order replacement parts directly via our Service Centre (see page 13). Please state the appliance type when placing an order.

A	Item	Description.....	Product No.
	15	Foam filter, pack of 3	30250130
	17	Paper filter bags, pack of 5.....	30250132
	16	Material filter for dry vacuuming	30250131
	20	Crevice nozzle	72800039
	13/14	Vacuum hose	72800218
	18	Floor nozzle	72800217

EU declaration of conformity

We hereby declare that the
wet and dry vacuum cleaner
model series PNTS 1300 A1

Serial number 100800001-1011101883

conforms with the following applicable relevant version of the EU guidelines as of model year 2010:

2004/108/EC • 2006/95/EC

In order to guarantee consistency, the following harmonised standards as well as national standards and stipulations have been applied:

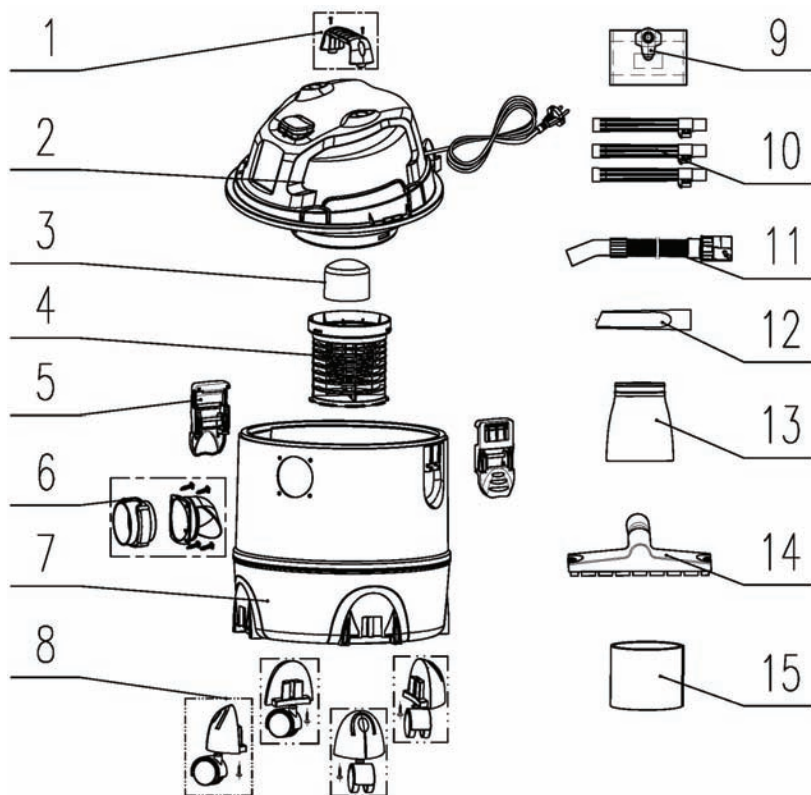
EN 60335-1/A13:2008 • EN 60335-2-2/A2:2006
EN 55014-1:2006 • EN 55014-2/A1:2001
EN 61000-3-2:2006 • EN 61000-3-3/A2:2005 • EN 62233:2008

Grizzly Gartengeräte GmbH & Co. KG
 Am Gewerbepark 2
 D-64823 Groß-Umstadt 21.12.2010



 Andreas Gröschl
 (Technical Manager and
 Documentation Representative)

Exploded Drawing



informative

Grizzly Service-Center

DES UK Ltd.

Unit B7

Oxford Street Industrial Park

Vulcan Road

Bilston, West Midlands WV14 7LF

Tel.: 0870 787 6177

Tel. from Ireland: 0044 870 787 6177

Fax: 0870 7876168

Fax from Ireland: 0044 870 787 6168

Email: grizzly@deslimited.com

IAN 55929

Grizzly Gartengeräte GmbH & Co. KG

Am Gewerbepark 2

D-64823 Groß-Umstadt

Last Information Update: 09 / 2010

Ident.-No.: 720804140920106

